

E-mail : precision.spares@yashon.co.in
Fax : 033-2497-5316

Ph. : 033-3252-6493
033-2497-5863
Mob. : 9903721772



PRECISION SPARES MFG. CO.

A RELIABLE HOUSE OF EVERYTHING SPARES PARTS ELECT. & MECH. ENGINEERS

Office & Works - A1/4, Diamond Park, P.O. Joka, Kolkata - 700 104
Works (Unit - 2) Balitkuri Surki Mill, Howrah - 711 113



FOUR WAY PANEL KEY; [REDACTED]; MINIMUM ACCEPTANCE QTY= 30 NOS; [REDACTED];



[REDACTED] [REDACTED]
FINGER BOLT FOR SIMENSE VCB EARTH TRUCK; MINIMUM ACCEPTANCE QTY = 30 NOS;



██████████; ██████████
Minimum Qty acceptance = 20 nos



Trip interlocking assembly for VCB/VCU / locking stud device full thread; ██████████;
Minimum acceptance qty = 50 nos; ██████████



Moving roller with lock of VCB; ██████████;
Minimum acceptance qty= 20 nos; ██████████;



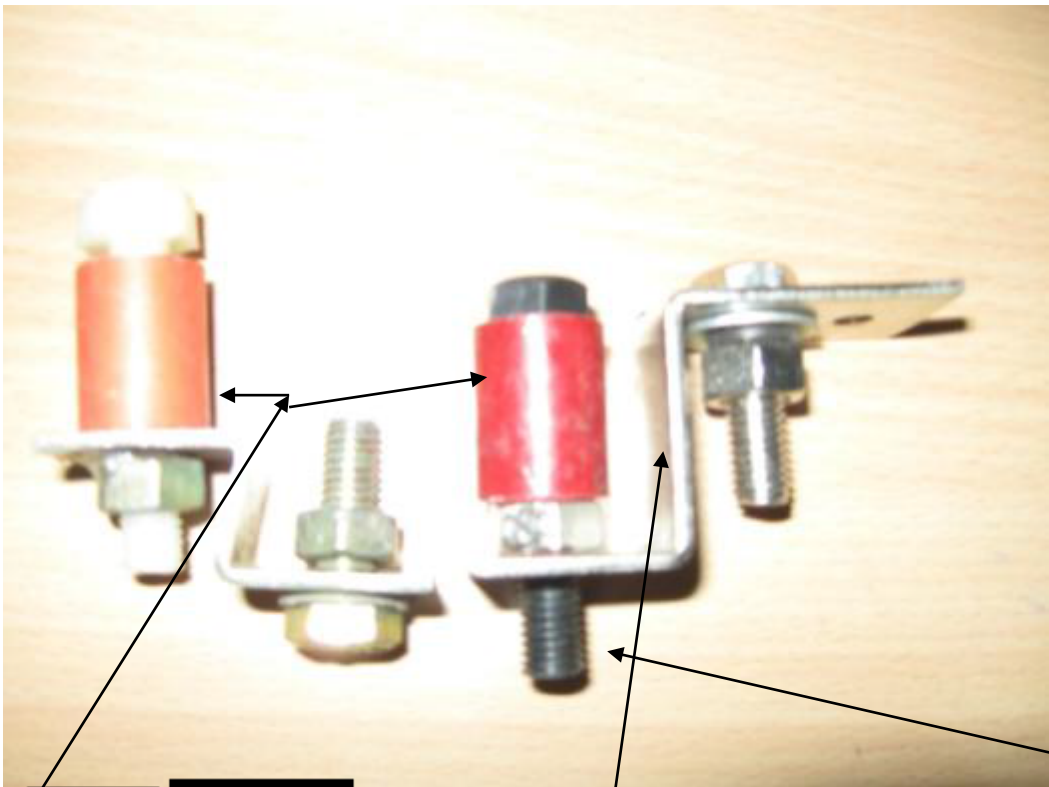
Locking bend angle device for vcb; [REDACTED];
Minimum acceptance qty= 20 nos; [REDACTED];



PP tube [REDACTED]; Unit in set basis; 1 set = 3 nos
Minimum acceptance qty= 5 sets; [REDACTED];



Insulator separator of jaw contact for VCB
Minimum acceptance qty= 20 nos; [REDACTED];



INSULATING BUSH

NYLON BOLT (1862A0114)

BEND CLAMP ASSLY;



CONTACT SET COMPLETE ASSLY WITH SILVER;



Insulating bush for pp tube

[REDACTED]



NYLON BOLT

[REDACTED]

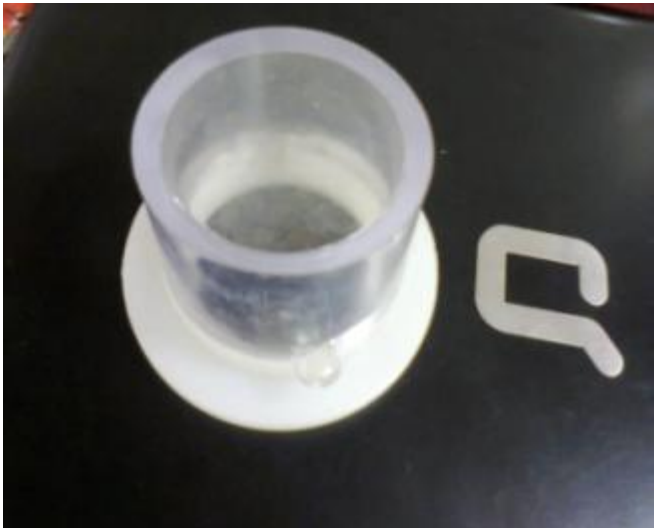


insularor block for pp tube of vcb

[REDACTED]



VCU Racking Handle [REDACTED]



Top cover of Push bottom switch

[REDACTED]

[REDACTED]



Precision spares make HEATER



Precision spares make GE Motor Slip rings



Precision spares make Old Type GE Motor Slip rings



Precision spares make Bus bar



Precision spares make Bus bar Copper with Silver Plated



Precision spares make Carbon Holder for Roller Slip ring



Precision spares make Coils

Ceramic insulator



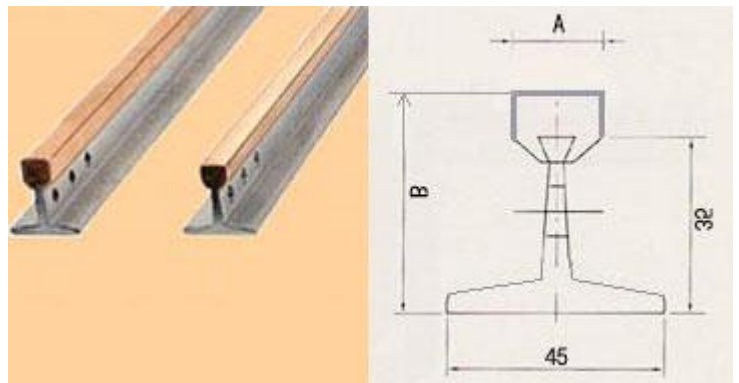
Precision spares make Epoxy moulded fiber glass insulator 3.3 kv to 6.6 kv for VCB

COPPERHEAD CONDUCTOR RAILS

The Copperhead Conductor Rail.

The "T" or "hollow T" section and the extruded copperhead is drawn through a special die, which compresses the copper flanges around the dovetail head of the rail, connecting the two components to a 100% rigid unit. These conductors have proven an outstanding success for safe power feeding of: Travelling Cranes, Loading Bridges, Container Handling Equipment, Monorails, Hoists, Coking Machinery and many other applications. The Copperhead Conductor Rails are available in sizes to meet individual current requirements from 200 to 3000 Amps.

The main users are: Steel Mills, Coking Plants, Gas Works, Cement Industries, Shipyards and Dockside enterprises, Transit and People Mover Systems.



Copperhead Conductor Rails with T-shaped steel bar and drawn up copper profile are the proven "Classics".

Aluminium-Copperhead Rails are very economical due to the light weight of the Aluminium and its high conductivity.

Solid-Copper Rails are recommended for heavy duty current rating and for humid locations.

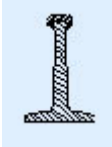
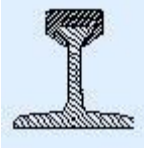
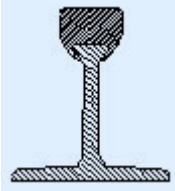
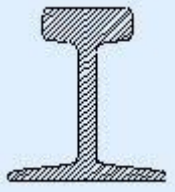
Variation in temperature and resulting expansion and contraction is compensated by standard **Expansion Joints**.

If required **Copperhead Rails** can also be supplied/tailor-made as per customer's requirement.

Heating Systems are available.

Special Conductors up to 3,000 A capacities are available.

CONDUCTOR RAIL SYSTEMS

Profile	Type	Material of Support Profile	Copper Cross Section (mm ²)	Max. Capacity (A) 100 % ED / 35° C
	PSMC/L20 PSMC/A20	Steel Aluminium	14 - 100 14	220 - 444 445
	PSMC/F35 PSMC/A35	Steel Aluminium	30 - 200 30 - 100	320 - 724 600 - 795
	PSMC/F45 PSMC/A45	Steel Aluminium	50 - 600 50 - 400	495 - 1432 790 - 1451
	PSMC/C20 PSMC/C35 PSMC/C45	Solid - copper Solid - copper Solid - copper	200 400 500 - 800	720 1080 1210 - 1580



Accessories for Copperhead Rails

Expansion Joints and Rigid Joints.

-
- Feeder Clamps and Locating.
- Rail Holders and Rail Supports.
- Insulators for standard and high voltage.
- Pantograph Type Current Collectors.

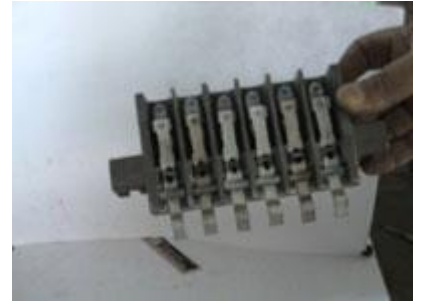


ELECTRICAL DIVISION

ELECTRICAL DIVISION

OVER HEAD TRANSMISSION LINE MATERIALS/SUBSTATIONS CLAMPS CONNECTORS, COMPRESSION TYPE TENSION SUSPENSION HARDWARE FITTING, EARTHING MATERIALS

- Tee Connector Pipe to Pipe
- G I Wire
- Stay Set
- Guy Set
- Bus Bar Support
- P G Clamps
- Tee Foil Clamps
- Isolator Pad
- Silica Gel Breather
- Bushing Fittings
- Horn Gap Fuses
- D O Fuses Channel Type
- Rotating AB Switch
- D O Fuses Bracket Type
- Tiling G.O.A.B. Switch
- Disc Insulators
- Solid Core Insulators
- Pin Insulator
- LT/HT Pin
- Transformer Bushing
- Tension Clamp
- Perforated Cable Tray
- Stay Set
- Guy Set
- Stay Wire
- Operating Rod
- Discharge Rod =



ELECTRICAL DIVISION

SPARES FOR AC/DC MOTORS/TRACTION MOTORS/AND OTHERS

- Slip Rings moulded& fabricated
- Commutators
- Brush Holders
- Carbon Brushes
- Terminal Block
- Terminal Board
- Motor Cooling Fan
- Motor Inspection Cover

**SWITCHES, SWITCH GEARS & SPARES + TERMINAL BUSHINGS AND H V INSULATORS**

- Relay (AC Over Current, Air Flow)
- Contactors (AC & DC)
- Master Controller
- Drum Controller
- Fixed & Moving Contacts
- Silver Contacts
- Cam Switch
- Finger Contact
- Chop Contact
- Knife Switch
- Isolators
- Limit Switches
- Coil
- Electro Magnetic Roller Assy
- Moulded Insulators (EPOXY, DMC, Backalite)



CATENARY WIRE SYSTEMS

(for full System on Turn Key Basis & also Spares as and when required): Reqd for the CDCP charging Car, Guide Cars, Pusher Cars, Quenching Cars, Bucket Cars

- **Grooved Conductor**
- **Pantograph Collector for Catenaries**
- **Sectionalizer Assy made of Copper Head Rail and other hardware and Insulators**
- **Bus Bar Clamps**
- **Expansion Joints**
- **End Terminations Sets**
- **Catenaries Wire**
- **Dropper Wire**
- **Bus Bar Grippers/Clamps for holding Power**
- **Conductors**
- **Special Power Conductors**
- **All types of Porcelain Insulators**
- **Catenary Wire Systems**
- **Current Collectors**
- **Current Collectors wit Brass Carbon pad**
- **Etc tailor made as per customers requirement**



ELECTRICAL DIVISION

DSL SYSTEMS: TROLLEY LINE ITEMS + SPARES OF OVER HEAD CRANES

(for full System on Turn Key Basis & also Spares as and when required): Req'd for the CDCP charging Car, Guide Cars, Pusher Cars, Quenching Cars, Bucket Cars

- Copper Headed Rails
- Copper Bus Bars (99.99 % purity)
- Aluminium Bus Bars
- Steel Bus Bars (90 LB/60 LB/30 LB Rails/ISA75, ISA50, ISA90 etc)
- Insulators
- Trolley Line Holders
- Current Collectors (1000/400/250/100/300 A)
- Current Collectors with CI, Brass, Carbonpad
- Limit Switch
- Bus Bar Al & Copper & Copper & Al Alloy
- Porcelain Insulators
- Led Based Trolley Line Indicators
- Trolley Line Indicators
- Flexible Jumper/Shunt
- Support for Copper Bus Bar
- Steel Aluminium Strap
- BI Metallic Strap used as Feeding Terminals
- Compensating Cables
- Etc tailor made as per customers requirement





Material Desc: - TELESCOPIC TYPE DISCHARGE ROD



Additional Specification:

TELESCOPIC TYPE DISCHARGE ROD WITH PVC INSULATED
CABLE 10 METER WITH ONE END COPPER SOCKETED AND
OTHER SIDE TO BE FIXED WITH CROCODILE CLIP.

Suitable for 33Kv.

132kv discharge rod telescopic type of 3 section total 5 Mtrs long, Epoxy grey colour fitted with Aluminiumdia casting rotating type earthing instrument to grip up to 50 Sq.mm dia conductor;
Total section: 3 (Three) epoxy tube;

Total assembled height:

Size of first epoxy tube (Bottom section): 36mm x 42mm x 1670mm

----Do---- but middle section: 30mm x 36 mm x 1670mm

----Do---- but 3rd of Top section: 25mm x 30 mm x 1670mm

- (a) 5/8" dia Aluminium cast earthing instrument
- (b) One side shield in bottom section.
- (c) Rubber grip = 2 nos
- (d) ISI Mark PVC Insulated Multi strand copper cable of 16 Sq.mm.wire as per IS: 694
- (e) Earthing Clamp "D" Type, Material Aluminium Alloy with adjusting Bolt;
- (f) Canvas carrying bag;



Complete Disc insulator bushing with bus clamp of 33 Kv switch Yard.
Porcelain insulator brown glazed with metallic joint device
Between two insulator will have one no bus clamp suitable for
33Kv switch Yard.
Bus Clamp will be made from LM-617 Grade Material.

Brief Desc: Star Point Grounding Assembly

Detailed Desc:

MATERIAL PO TEXT: Short Description : Star Point Grounding Assembly

===== XXXXXXXXXXXXXXXXXXXX Make :

PRECISION SPARES MFG.CO. (KOLKATA) =====

Additional Specification: 3 Nos braided copper flexible copper (SWG 46) WIRE gauge, having 6 mm thickness x 3nos of braided Copper = 800 mm x 1 nos of braided copper = 2000 mm Length; all copper braided should be in one brass device of Shorting system and brazed with said equipment with Separate copper socket. Insulation glass sleeve should be Covered on all copper flexible jumpers. Heavy duty grounding Clamp should be fitted with all copper flexible jumpers

Additional Specification :

33KV A.C.Isolator(OFF-LOAD), Complete Assembly;

33KV double break and double start with Rotating type

with 6 no 22KV x 430 mm creeper Distance quartz insulator(Post-Insulator)

complete with 32 N.B.G.I.Pipe 18" to 19" (Rated Current:1250Amps)

Earth switch, with handle and key should be provided along with equipments.



Material Desc :- Bus Bar Clamp of copper Alloy



DMC MOULDED INSULATOR



EPOXY INSULATOR FOR 6.6KV VCB



DSL INSULATOR FOR CRANE



DISC AND SUPPORT INSULATOR FOR 33KV SWITCH YARD



POWER COLLECTOR FOR RMHP



CLUTCH ASSEMBLY FOR COIL OF COIL TONG



CABLE GUIDE ROLLER FOR HMC



PRECISION SPARES MAKE PULLEY AND COUPLING FOR TATA STEEL



BEWA TROLLEY FOR EOT CRANE

HIGH VOLTAGE DETECTOR

290 HD

INTRODUCTION

The detector detects a high and extra high voltage in AC lines. An elongage insulation rod permits checking of high tension circuits at safe distance for voltage. Also it is telescopic compact, light-weight, easy to use and handy.

FEATURES

- **Telescopic, compact, light-weight**
The detector length can be expanded from 1370 mm to 2450 mm
- **Light weight (Approx. 59g), easy to use and handy**
- **High-voltage detectable**
The equipment, whether in stretched state is available for voltage detection in high-tension (3 kV ~ 81.5 kV)
- **Easy to recognize indication**
Intermittent lighting in red of a high intensity light emitting diode and intermittent audible sound of an electronic buzzer are easy recognizable at a full daylight, noisy location
- **Water proof**
The detecting head, being tightly enclosed, is free from any trouble due to dust, water
- IEC/EN 61243-1, 60068-2-6, 60068-2-14, 60068-2-32

SPECIFICATIONS

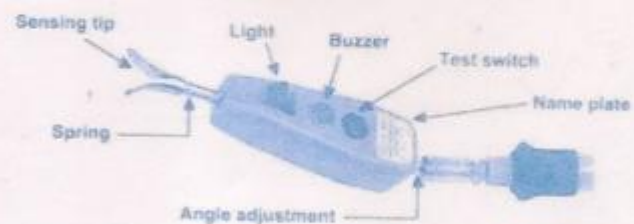
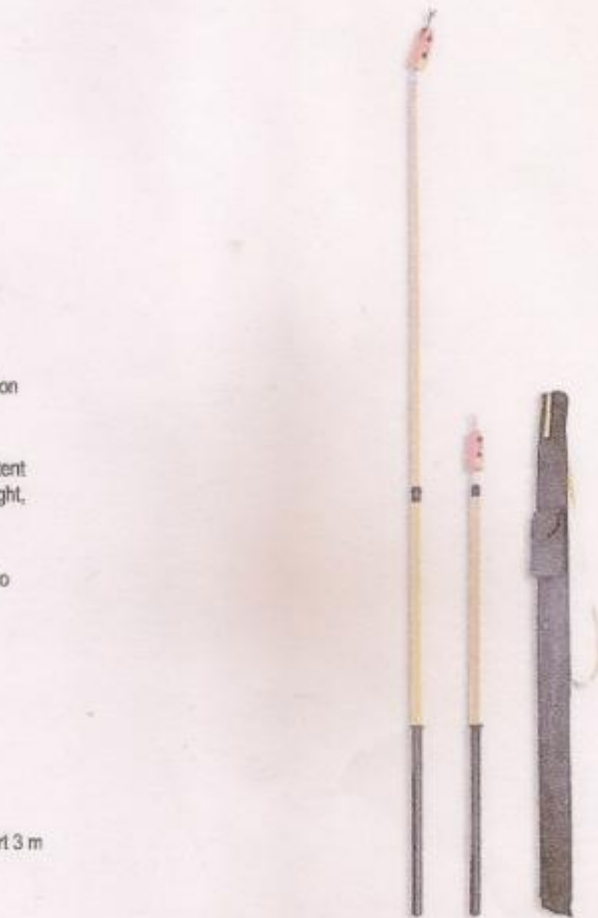
Measuring voltage range	: 3 KV ~ 81.5 kVAC
Frequency	: 50/60 Hz
Display	: Light : Flashing red light Sound : Intermittent sound 50 dB apart 3 m
Overall length	: Retracted : 1370 mm ± 50 mm Extracted : 2450 mm ± 50 mm
Operating temperature	: -10°C ~ 50°C
Operation start voltage (To ground)	: Bare wire : 3kV ± 600V AC
Battery	: 2 button-cells LR44 (1.5V)
Weight	: Approx. 590g (battery included)
Accessory	: Instruction Manual, Carrying Case

COMMON RATINGS

Withstand Voltage (On insulating rod)	: 100kV/300mm : 5 minutes
Insulation Resistance	: 20000MΩ min by 1kV/DC megger at the same testing location as withstand voltage
Leakage current	: 100uA 'OR' less than 100uA at withstand voltage test
Construction	: Water proof (detecting head impervious to water)

*Technical Specifications & Appearance are subject to change without prior notice

THE QUALITY LEADER



PRECISION SPARES MFG. CO.

D. Paul

D. PAUL (Chief)

A/1/4, Diamond Park, Kolkata - 700 104



Bewa trolley



Power collector for EOT Crane



DSL Insulator



Tipping coil



11 Kv bushing porcelain insulators

PAGE: 22







Over head transmission spares

Clamp and connector Details .

1. Transformer Bushing Clamp for Moose Conductor



2. CT CONNECTOR MOOSE CONDUCTOR



3. ISOLATOR CLAMP FOR MOOSE CONDUCTOR



4.BREAKER CONNECTOR FOR MOOSE CONDUCTOR



5. TARANTULA TO MOOSE CONNECTOR



6.TESNION CONNECTOR DEAD END CLAMP



7. TARANTULA TO MOOSE CONNECTOR



8. BUS POST INSULATOR CLAMP FOR MOOSE CONDUCTOR



9.MOOSE TO MOOSE CONNECTOR



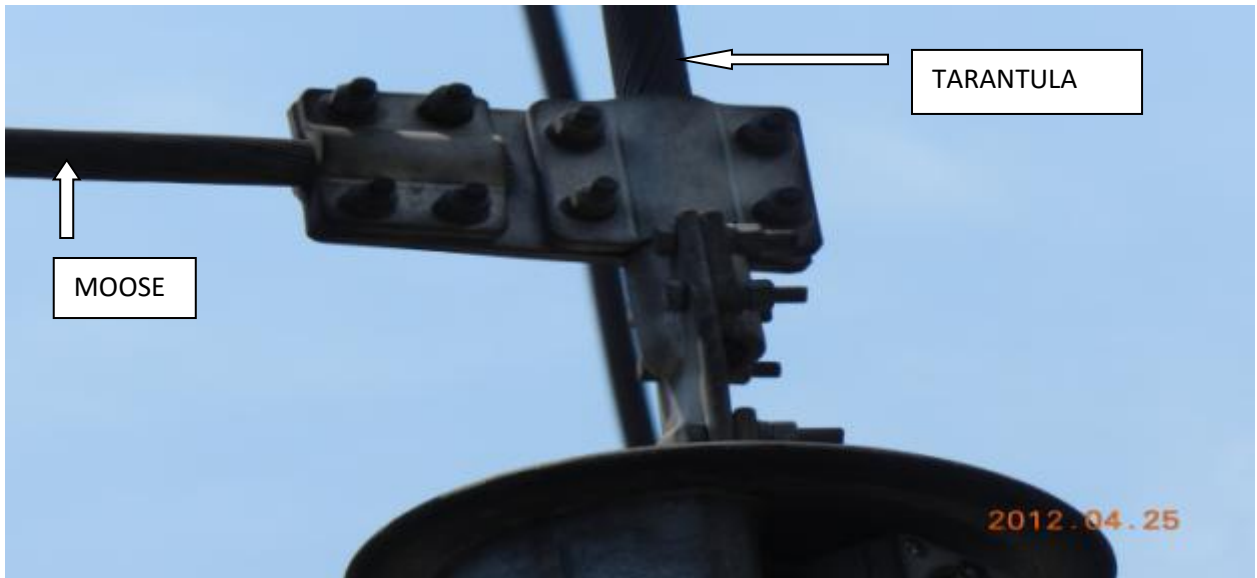
10.TARANTULA TO TARANTULA CONNECTOR



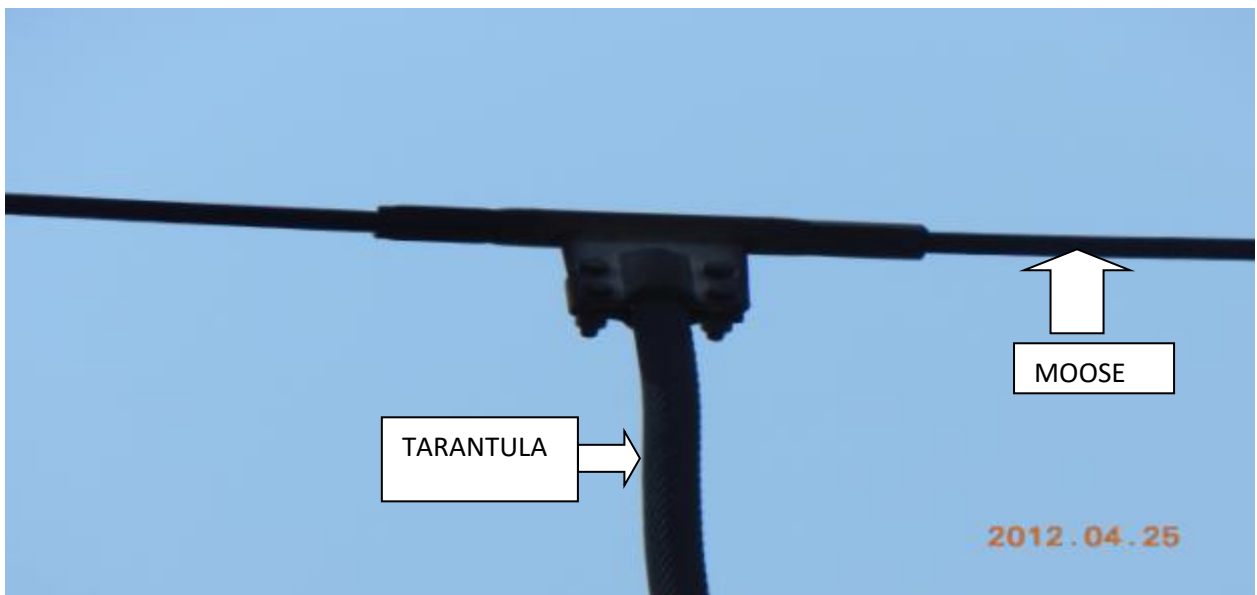
11.CT CONNECTOR FOR MOOSE CONDUCTOR



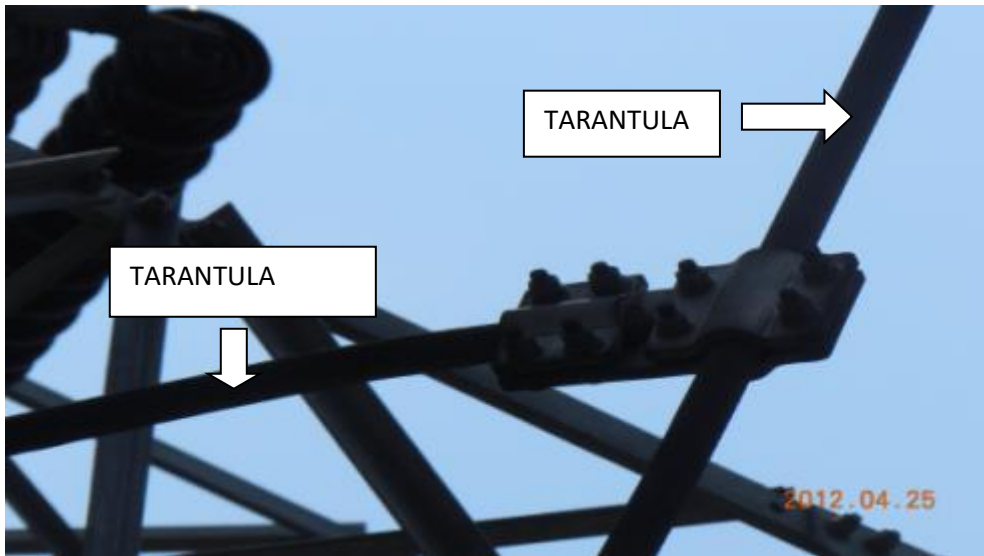
12.CVT CONNECTOR FOR TARANTULA TO MOOSE CONDUCTOR



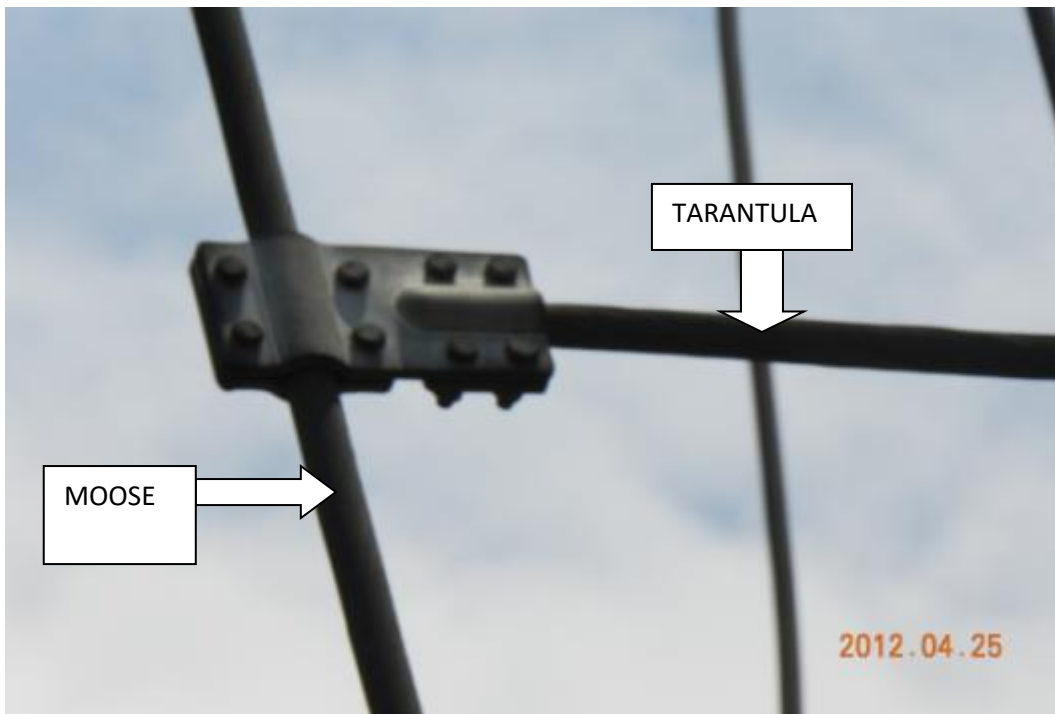
13.MOOSE TO TARANTULA CONNECTOR



14. TARANTULA TO TARANTULA CONNECTOR



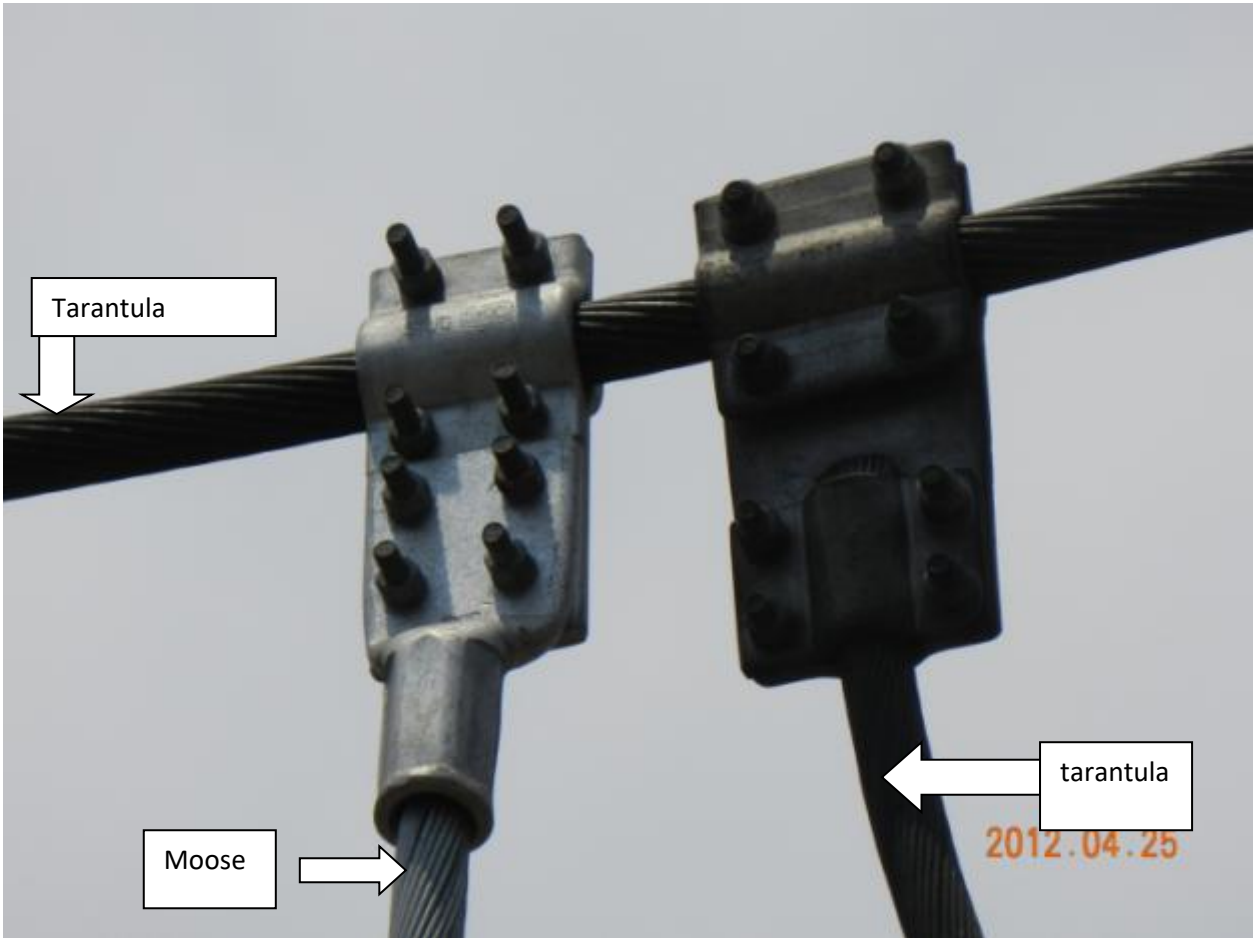
15. MOOSE TO TARANTULA CONNECTOR



16. MOOSE TO MOOSE CONNECTOR



17. TARANTULA TO MOOSE



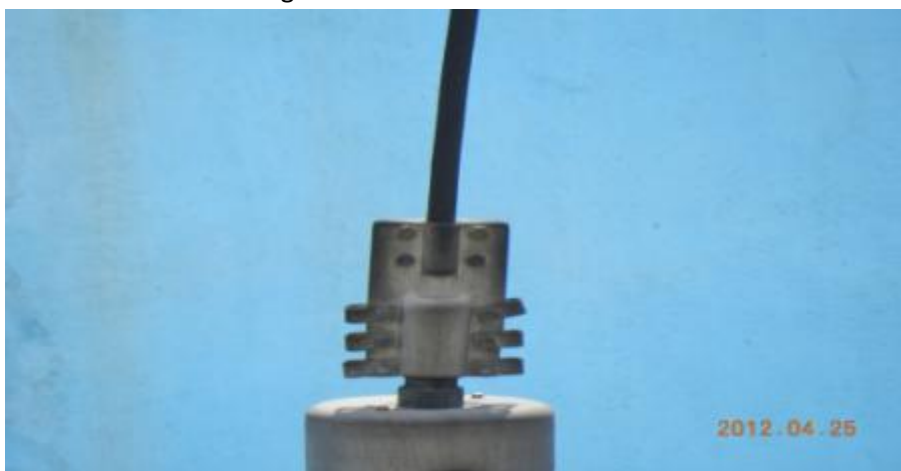
18. Transformer Bushing Connector for Moose Conductor



19. Moose to Moose Connector



20. Transformer Bushing Connector



21. CT Connector for Moose Conductor



SEE NEXT PAGE



SEE NEXT PAGE OF ASSEMBLY IMAGE OF MODIFIED STAR POINT GROUNDING ARRANGEMENT



3 POLE EARTHING AND SHORT-CIRCUITING DEVICE.

The rigid classification of the terminal points to the connecting elements as well as stated maximum clamping ranges must be observed. The cable length of the earthing and short-circuit device should be minimum 120% of the distance between two terminal points. Device will be assembly with the following spare such as, copper cord with transparent insulation (class –f) tube, shorting device (metallic of copper/GM), fixing clamps, earthing clamp (Heavy duty) etc. etc. All copper components are electrolytic grade, having purity of 99.9%;

OTHER REQUIREMENT:

- (1) When screwing cable lugs of earthing and short-circuiting cables together with connection elements, it has to be ensured that a tightening torque of 30 to 40 Nm is kept.
- (2) Earthing and short – circuiting device may be used with earthing rod (discharge rod)only.
- (3) XXXXXXXXXXXXXXXXXXXX

X-----

**SEE NEXT PAGE OF ANOTHER PRODUCT OF STAR POINT
GROUNDING ARRANGEMENT.**



FOUR WAY PANEL KEY



FINGER BOLT FOR SIMENSE VCB
EARTH TRUCK



Trip interlocking assembly for VCB/VCU /
locking stud device full thread;



Moving roller with lock of VCB;



Locking bend angle device for VCB / VCU;



PP tube



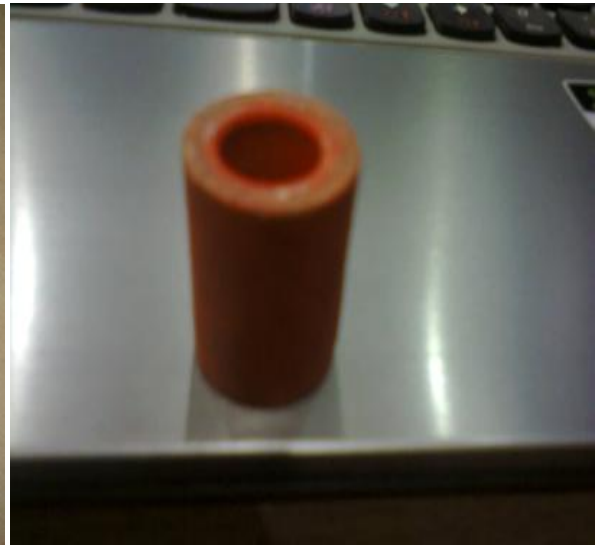
Insulator separator of jaw contact for VCB



NYLON BOLT WITH NUT & PAD



CONTACT SET COMPLETE ASSLY WITH SILVER;



insulating bush for pp tube



NYLON BOLT



VCU Racking Handle



Top cover of Push bottom switch

MOTOR SPARES



SLIPRING FOR MOTOR



**BRUSH HOLDER
DOUBLE POCKET**



HOLDER WITH CARBON BRUSH ASSEMBLY



**BROWN GLAZED CERAMIC QUATRZ INSULATOR
CAPACITY 6.6 KV UP TO 33 KV**



80 KV INSULATOR



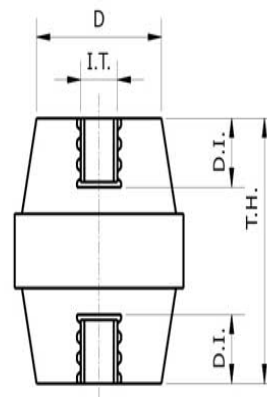
CONICAL ESP INSULATOR 80KV



**PORCELAIN CYLINDRICAL INSULATOR
120 KV ESP INSULATOR**



**EPOXY MIDDLE RIB INSULATOR
3.3 KV**



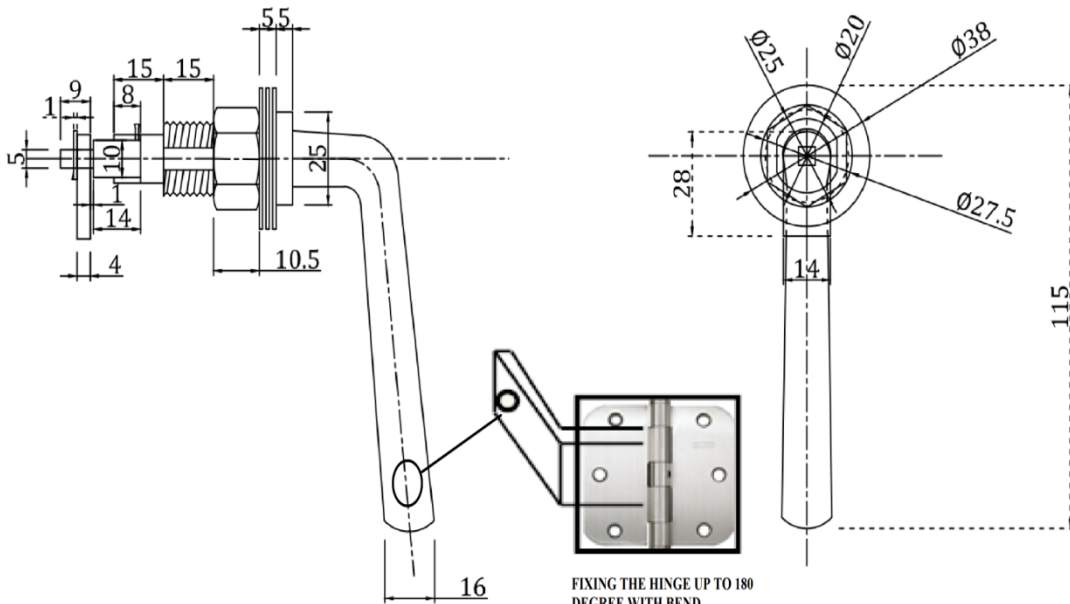
**EPOXY SUPPORT INSULATOR
6.6KV**



11 KV FIBER GLASS EPOXY INSULATOR FOR 33 KV

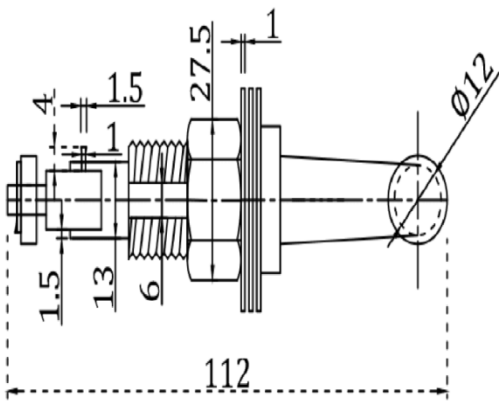


PANEL DOOR LOCKING MECHANISM



FIXING THE HINGE UP TO 180 DEGREE WITH BEND LOCKING PLATE WITH SHOULD BE ISOLATED THE HANDLE

ITEM NAME HANDLE	PANEL DOOR LOCKING (FOR SINGLE DOOR)
ITEM TYPE	FORGING & MACHINING
MATERIAL	IS:225
COATING	NICKLE CHROME (14 MICRONE)
SPECIAL FEATURES	FOR POSITIVE ISOLATION, ONE NO EXTRA LOCKING BEND PLATE TO BE PROVIDED WITH FIXING HINGE WHICH SHOULD BE MOVABLE.



PRECISION SPARES MANUFACTURING CO			
DEPT	DESIGN	CODE	
AREA	KOLKATA	CODE	
SUBJECT		CODE	
SHT.SIZE	MATERIAL: IS: 225 BRIGHT STEEL GRADE: E8-8	REV	
A4		0	
CLIENTS: TATA STEEL LTD USER: LD#:-ELECTRICAL JAMSHEDPUR DIV JHARKHAND		PANEL DOOR LOCKING ARRANGEMENT (SINGLE DOOR)	
SCALE -N.T.S	DATE 19/06/17	NAME D.PAUL	F.A.P
DRAWN			
RESP			
DEPT	DESIGN DEPT		
TEL	9903721772		

PRECISION SPARES MFG.CO (CRANE CONTROL)

CURRENT COLLECTORS & its SPARES

INSULATOR, MADE FROM PORCELAIN OR DMC OR SMC OR FIBRE GLASS EPOXY;

COPPER FLEXIBLE JUMPER

M.S. POWR ANGLE BUS BAR

- * **DSL BUS BAR (GI, COPPER, ALU)**
 - * **CRANE BRAKES (THRUSTER, SHOE BRAKE, ELECTRO MAGNETIC)**
 - * **LIMIT SWITCH (LEVER, COUNTER WEIGHT, ROTARY GEAR, WORM DRIVE)**
 - * **FESTOON SYSTEM (C RAIL, I BEAM TROLLEY, CABLE CARRIER).**
 - * **SAFETY DEVICES (ANTI COLLISION DEVICES).**
 - * **ELECTRICAL CONTROL (PENDANT STATION, RADIO REMOTE, CABLES).**
 - * **CONTROL EQUIPMENT (RESISTANCE BOX, MASTER CONTROLLER).**
 - * **CABLE REELING DRUM (SPRING OPERATED, MOTORIZED, EXTENSION REEL).**
-



Counter Weight Limit Switch

Other Products in 'CRANE LIMIT SWITCH' category



EOT Crane Gravity Limit Switch



Gravity Limit Switch



Rotary Gear Limit Switch



Weight Operated Limit Switches



Lever Type Limit Switch



Lever Type Limit Switch



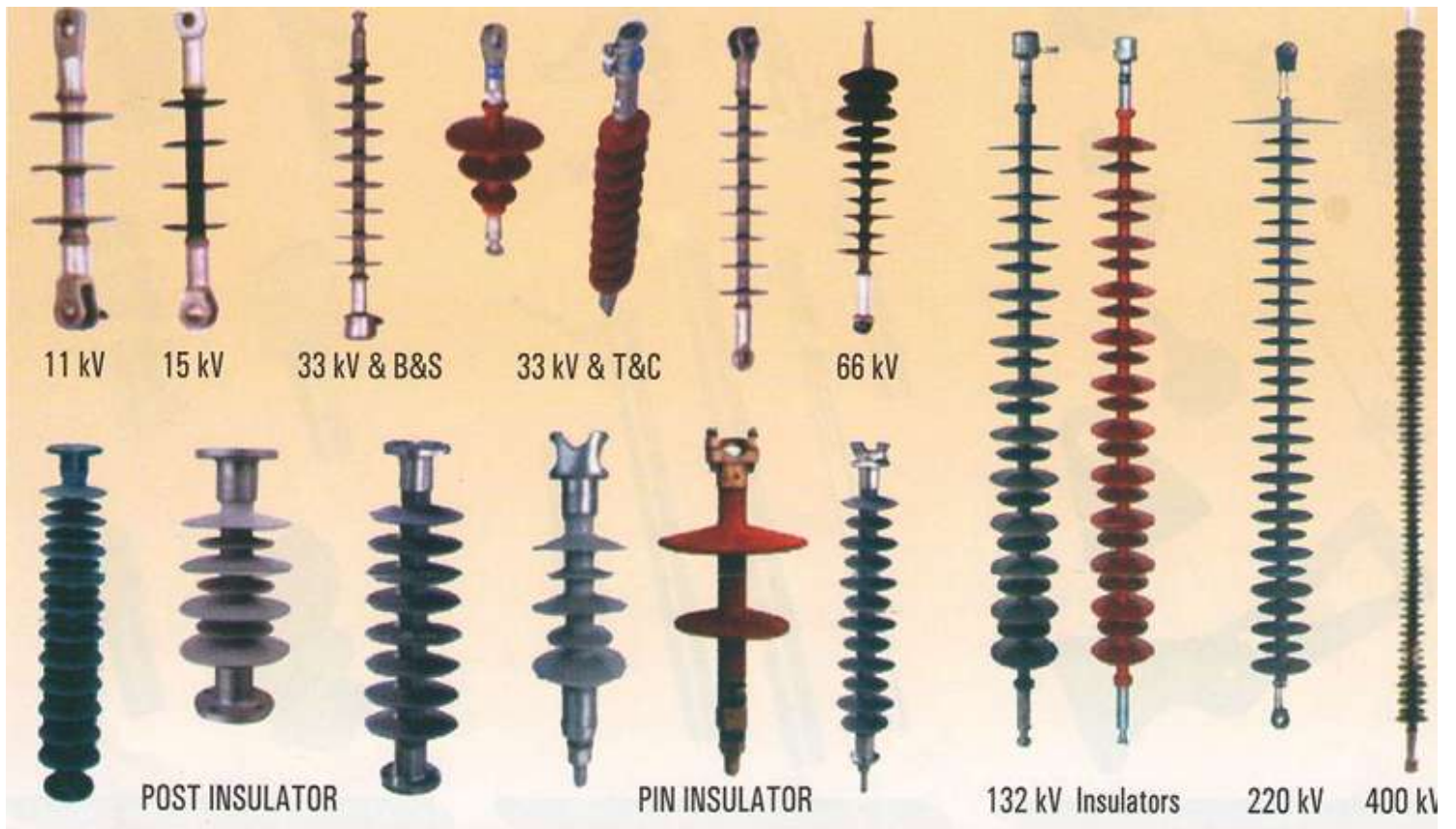
COLLECTOR



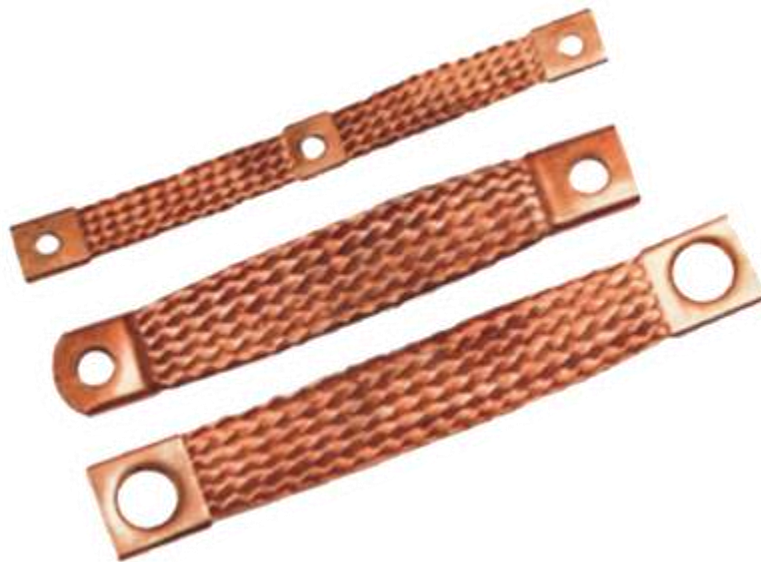


PORCELAIN INSULATORS





DMC , FRP, SMC MAKE INSULATORS



COPPER FLEXIBLE SHUNTS

ETC ETC ETC ETC ETC

SHORT DESCRIPTION	MAKE
COUPLING GEAR COUPLING RIGID	PSMC
BEWA TROLLEY	PSMC
RELAY ACCS: RELAY ADAPTER	PSMC
CRANE ACCS CLUTCH PLATE LINER	PSMC
ELECTRICAL INSULATOR GLASS	PSMC
SW GR&CB SPR PANEL KEY PRECISION SPARES	PSMC
INST SPR;SENSOR PROTECTION GLASS	PSMC
INST SPR;FIRE RETARDANT INSULATION SHET	PSMC
INST SPR;PHOTOEYE PROTECTION CAP	PSMC
INST SPR;PHOTOEYE SENSOR GUARD	PSMC
INST SPR;PHOTOEYE PROTECTION GLASS	PSMC
SHAFT EXTENSION FOR ENCODER	PSMC
TSCR, CASTER MOULD SMS SIEMAG HANGER	PSMC
MAGNETIC CLUTCH ADJUSTMENT TOOL [REDACTED]	PSMC
CR5ANE ACCS POWER COLLECTOR	PSMC
CRANE ACCES POWR COLLECTOR	PSMC
CRANE ACCES; ROPE GUARD ASSLY	PSMC
ELECT INSULATOR GLASS 1100 V LENGTH 430 MM X 430 MM WIDTH	PSMC
EL INSLTR;CERAMIC ,INSULATOR ,415 V,OUTD	PSMC
MOTOR&ACCES,STAR POINT GROUNDING ASSY,PR	PSMC
BRUSH HOLDER SPRING ,PRECESION SPARES MF	PSMC
CPLNG SPR,COUPLING PAD,[REDACTED],P	PSMC
POWER RAIL CLEANING SYSTEM ,PRECISION SP	PSMC
SPARE;COPPER DISC,LADLE FURNACE,LD1	PSMC
COUPLNG;COUPLING FOR ROTARY POSITIONER ,	PSMC
BEWA TRLY;ELECTRIC HOIST ,PRECISION SPAR	PSMC
BEWA TRLY;ELECTRIC HOIST ,PRECISION SPAR	PSMC
VI YOKE SPRING HOLD PIN FOR LF ,PRECISIO	PSMC
CONTACT PAD COPPER RING ,PRECISION SPARE	PSMC
POWER COLLECTOR ASSEMBLY ,PRECISION SPAR	PSMC
POWER COLLECTOR ASSEMBLY ,PRECISION SPAR	PSMC
BRASS PIN FOR TERMINAL CONNECT ,PRECISIO	PSMC
COMPLET ASY OF ISOLATOR HANDLE ,PRECISIO	PSMC
DOOR FTNG;HINGES ,PANNEL DOOR ,ASSEMBLED	PSMC
CLUTCH PLATE ASSEMBLY ,PRECISION SPARES	PSMC
MOTOR TERMINAL BLOCK ,PRECESION SPARES	PSMC
MOTOR TERMINAL BLOCK ,PRECESION SPARES	PSMC
COPPER STUD WITH FASTNERS ,PRECESION SP	PSMC
HAMMER MONITORING WHEEL UNIT ,PRECISION	PSMC
HT BRASS NOZZLE ,PRECISION SPARES MFG.CO	PSMC
LF PIPE LINE FITTING ,PRECISION SPARES	PSMC
HND OPTD TRLY;300 KG,400 KG,ANGULAR SUPP	PSMC
PWR DSTBN PNL;TELESCOPIC DISCHARGE ROD ,	PSMC
PWR DSTBN PNL;PANEL LOCK ,PRECISION SPAR	PSMC
BRACKET FOR PILOT BURNER [REDACTED]	PSMC
CRBN BRS;MGX-10/CL-1 ,PRECISION SPARES	PSMC

CRBN BRS;MG5X ,PRECISION SPARES MFG CO	PSMC
CRBN BRS;MG5X ,PRECISION SPARES MFG CO	PSMC
BRACKET FOR PILOT BURNER ,PSMC/BRCKT/PLT	PSMC
ACTUATOR FOR PILOT BURNER ,PSMC/ACTR/PLT	PSMC
75 TON TONG ,ANCHOR BLOCK ASSEMBLY ,PSMC	PSMC
Star Point Grounding Assembly	PSMC
PWR DSTBN PNL;PANEL LOCK ,PRECISION SPAR	PSMC
GEAR DRIVE FOR CCS SCREEN ,PRECISION SPA	PSMC
SW GR&CB SPR,PANEL KEY,PRECISION SPARES	PSMC
SEAL KIT ,PRECISION SAPRES MANUFACTURIN	PSMC
MODIFIED STUD FOR 28T TONG ,PRECISION SP	PSMC
SHUNT COMMAND SWITCH ,PRECESION SPARES M	PSMC
SET OF TBUSH OF INTE GEAR ASLY PRECISIO	PSMC
ACT SHAFT GEAR PINI+2 CIRCLIP PRECISION	PSMC
PINION FR MOTR GEAR OF ACT COM PRECISIO	PSMC
SPR PINION INTERNAL GEAR ASLY PRECISION	PSMC
TERMINAL HOUSING COVER FR ACTR PRECISIO	PSMC
INT GEAR ASSM OF ACT OF PINION PRECISIO	PSMC
MOTOR COVER FOR ACTUATOR PRECISION SPAR	PSMC
TERMINAL HOUSING COVER FR ACTR PRECISIO	PSMC
Love Joy coupling for fresh water pump	PSMC
HOOK LATCH ,PRECISION SPARES MFG. CO. ,P	PSMC
HOOK LATCH ,PRECISION SPARES MFG. CO. ,P	PSMC
HOOK LATCH ,PRECISION SPARES MFG. CO. ,P	PSMC
HOOK LATCH ,PRECISION SPARES MFG. CO. ,P	PSMC
HOOK LATCH ,PRECISION SPARES MFG. CO. ,P	PSMC
HOOK LATCH ,PRECISION SPARES MFG. CO. ,P	PSMC
HOOK LATCH ,PRECISION SPARES MFG. CO. ,P	PSMC
HOOK LATCH ,PRECISION SPARES MFG. CO. ,P	PSMC
HOOK LATCH ,PRECISION SPARES MFG. CO. ,P	PSMC
HOOK LATCH ,PRECISION SPARES MFG. CO. ,P	PSMC
HOOK LATCH ,PRECISION SPARES MFG. CO. ,P	PSMC
CRANE ACCES;POWER COLLECTOR ASSEMBLY	PSMC
COUPLNG;HYDRAULIC MOTOR COUPLING ,HYDRAU	PSMC
NECK BUSH ASSEMBLY OF ACTUATOR PRECISIO	PSMC
ACTUATOR NECK ASSLY PRECISION SPARES MF	PSMC
BEWA TRLY;WIRE GRIPPER SEPARATOR PRECIS	PSMC
BEWA TRLY;WIRE GRIPPER ARRANGEMENT PREC	PSMC
CRANE ACCES	PSMC
CRANE ACCES;HANGER CLAMP FOR POWER RAIL	PSMC
POWER DISTRIBUTION ACCESSORIES	PSMC
T'COUPLE FLANGECOUPLING DEVICE PRECISIO	PSMC
LOCKING ARRANGEMENT OF PANEL DOOR	PSMC
BOLT LCKING HEX HEAD HIGH TENSN BLT25M	PSMC
SPARE PANEL DOOR LOCKING HINGEVESSELL	PSMC
INSTD CNDTR;CIRCULAR ,COPPER ,DIA-32 MM,	PSMC
CRANE ACCES;DC POWER COLLECTOR	PSMC
BOLT LCKING HEX HEAD HIGH TENSN BLT25M	PSMC

SPARE PANEL DOOR LOCKING HINGEVESELL	PSMC
MOTOR&ACCESPINPRECISION SPARES MFG. CO	PSMC
MOTOR&ACCESROTOR XTNSON PNON STUD ASSMB	PSMC
INSTD CNDTR;CIRCULAR COPPER DIA-32 MM	PSMC
SW GR&CB SPRCONTACT KITPRECISION SPARE	PSMC
SW GR&CB SPRCONTACT KITPRECISION SPARE	PSMC
PWR DSTBN PNL;COPPER SHUNT PRECISION SP	PSMC
BOLT ;HEX HEAD,20MM,150MM,70	PSMC
HEX HEAD 20 MM 110 MM 80, SS304	PSMC